

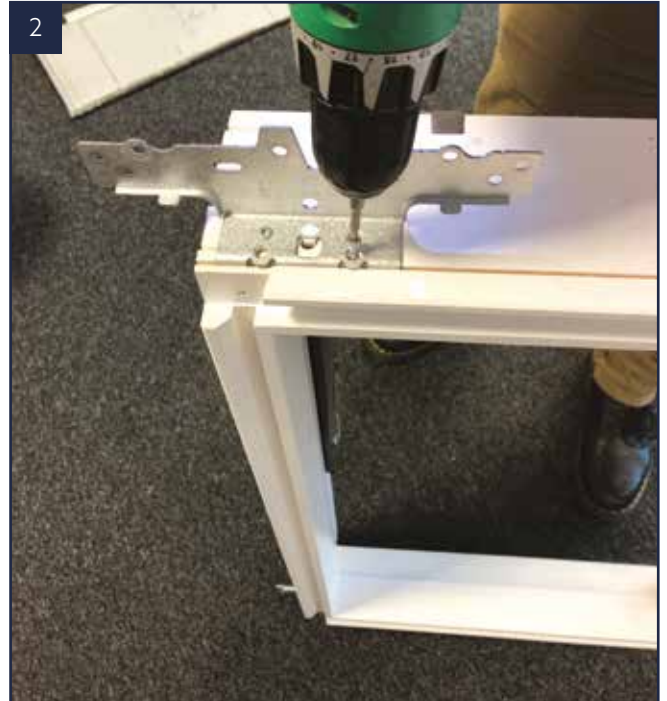
# Guardian Warm Roof VELUX® Window Installation Guide

# VELUX® Window System

## Fitting the Frame



1 First unpack the VELUX® window as per the instructions on the box.



2 Align the brackets to the pre drilled holes and fix using the screws provided top and bottom.



3 Ensure foam is fitted around aperture.



4 Align the unit central to the hole.



5  
Check that the brackets are located at the top and bottom, and the frame is square.



6  
Once unit is centralised, secure to the roof using the fixing screws.



7  
Unit in correct position.

# VELUX® Window System

## Fitting the Tiles and Flashings



1 Pre-notch the lower tiles 120 mm either side of the VELUX® unit.



2 Lay the membrane on the roof and around the VELUX®.



3 Ensure you leave a vertical lap all around the VELUX®.



4 Layout of tiles and VELUX® should look be as above.



5 Nail tabs supplied in VELUX® flashing kit to the base of the frame, apply silicone to the underside and bottom edge of the flashing kit.



6 Sit the flashing in position and fold the tabs over to secure it.



7 Fix the kit into the VELUX® unit using the screws provided.



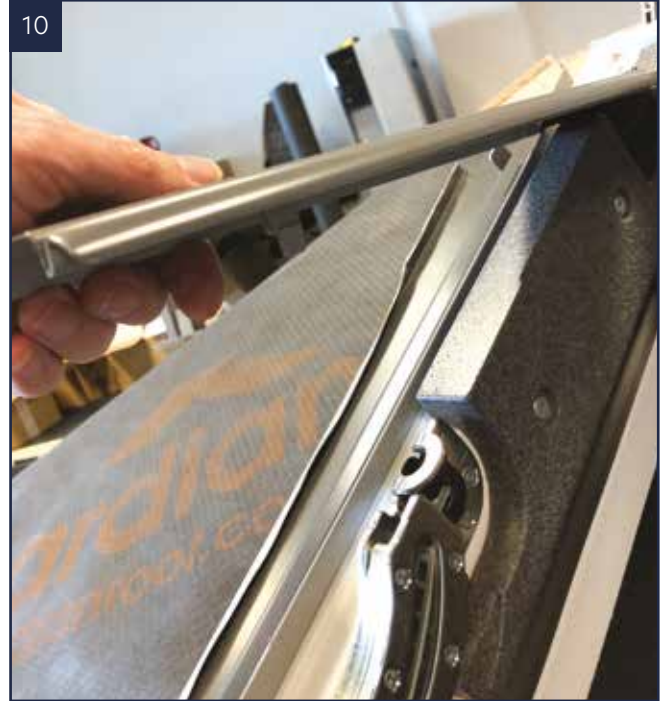
8 Position the side flashing parts .

# VELUX® Window System

## Fitting the Tiles and Flashings



9  
Fold over the tabs to secure into position.



10  
Fit top flashing section.



11  
Clip tabs into place.



12  
Flashing should look like this.



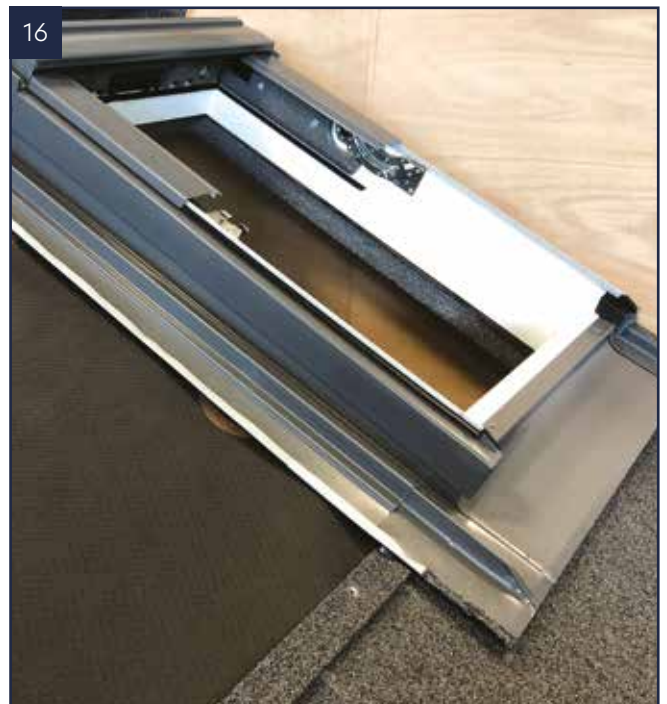
Fit top cover of the flashing kit and screw into place using fixings supplied.



Slide down into place to create a tight fit slot over the top.



Lock in the tabs as shown to hold into place.



Finished detail as shown

# VELUX® Window System

## Fitting the Tiles and Flashings



Run a bead of silicone down the edge of the flashing kit.



Seal the internal lip of the tile before fitting 100 mm along the length of the tile.

**NOTE:** Repeat steps 17 and 18 for each row of tiles until the top of the VELUX® window.



# Fitting the Window



**NOTE:** protect the frame covers before sitting the sash in position (using card from the product cartons) to minimise the chance of the protective coating being scratched.

Fit the VELUX® sash by sitting it upside down and lining up the hinges.



Engage the hinges and allow it to slot in. Then flip the sash over into the main frame.



Use the touch up glue and grit to finish the bottom edge of the flashing.



Apply the grit to the glue.



Finish as shown.

# VELUX® Window System

## Finished Window

---



# Fitting the Guardian Slate Tile



With bottom of VELUX® flashing kit in position Place the second row of tiles at the correct depth. Mark out on the skirt the amount to be trimmed.



Using tin snips cut out the area required to be removed on the flashing kit as shown above.



Apply silicone to underside and bottom edge of flashing kit.



# VELUX® Window System

## Fitting the Guardian Slate Tile



Sit the flashing kit into position, again pressing down to create a good seal to the slates.



Position side flashing parts and fold over tabs.



Fold over raised edge of the flashing kit using a plastic mallet or a hammer and block of timber.



Try to get it as flat as possible so that the tiles can sit flush.



9 Fit top cover of the flashing kit and screw into place using fixings supplied.



10 Position top section of flashing kit.



11 Run a bead of silicone down the flattened edge of the flashing kit where the next row of tiles will be fitting.



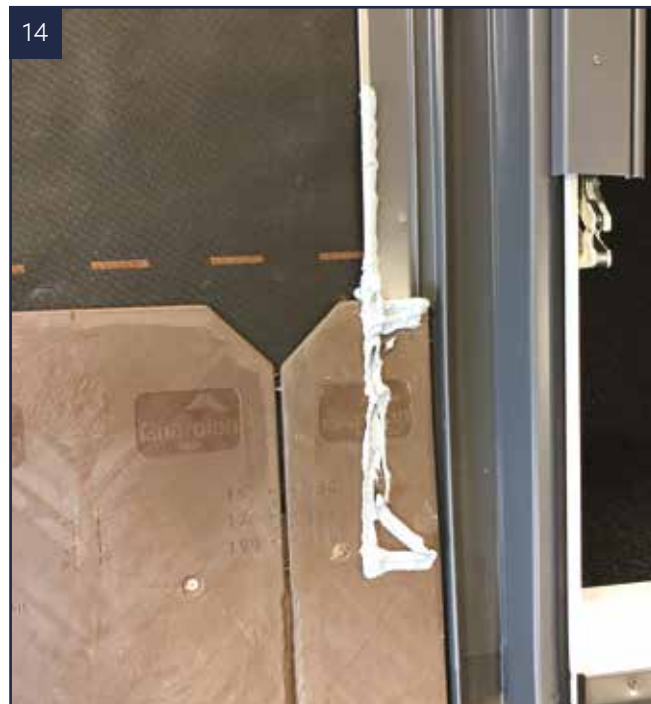
12 Position the first slate in line with the newly notched bottom edge of the kit.

# VELUX® Window System

## Fitting the Guardian Slate Tile



13 Press down in to place and screw down using fixings supplied.



14 Continue to apply silicone onto the next row of slates in line with the edge of the flashing kit.



15 Continue sealing and fitting the rest of the slates in the standard pattern.



16 The finished tile edge and flashing kit should look as above.





Home improvement solutions from



[www.guardianbuildingsystems.co.uk](http://www.guardianbuildingsystems.co.uk)  
[customerservices@guardianbuildingsystems.co.uk](mailto:customerservices@guardianbuildingsystems.co.uk)  
0800 066 5832  
Units 2-3 Dunstall Park Road, Derby DE24 8HJ



Whilst Guardian has made every attempt to ensure that this information is accurate and reliable at the time of its publication; we cannot accept responsibility for any errors, omissions, inaccuracies or any changes that have occurred since the date of publication or for the results obtained from the use of such information.

Version 1.0, Feb 2022