

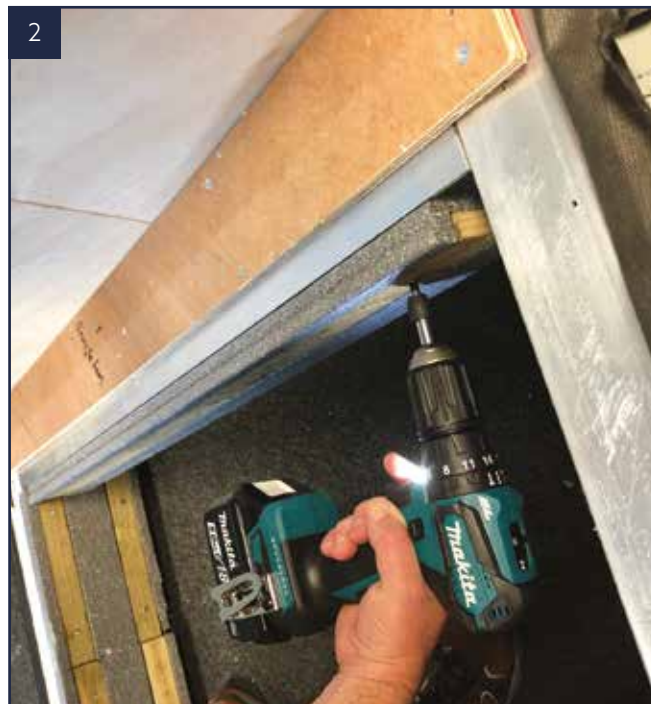
Guardian Warm Roof Solstice Panel Installation Guide

Solstice Panel System

Fitting the Frame



Once the roof has been assembled and the timber has been fitted, fit the eaves insulation.



Fit rafter insulation on either side of the solstice opening.



Fit ridge insulation.



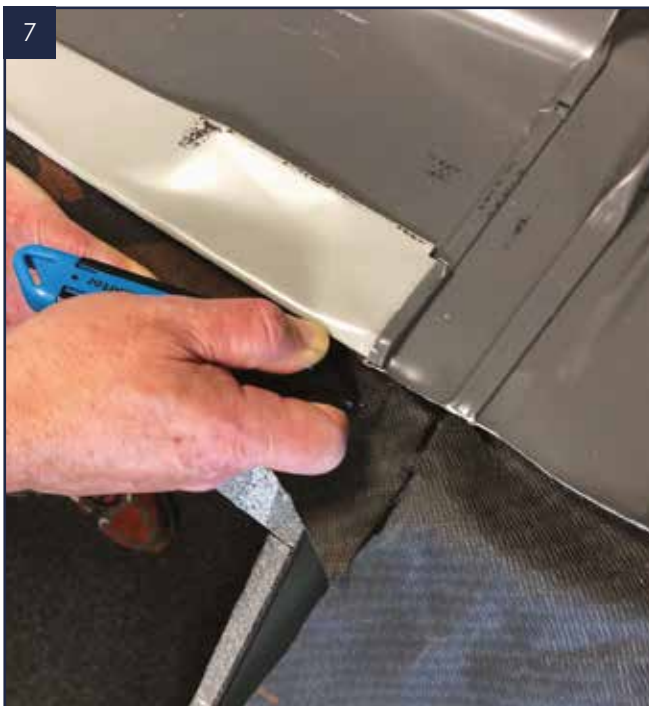
Solstice opening is now fully lined with insulation.



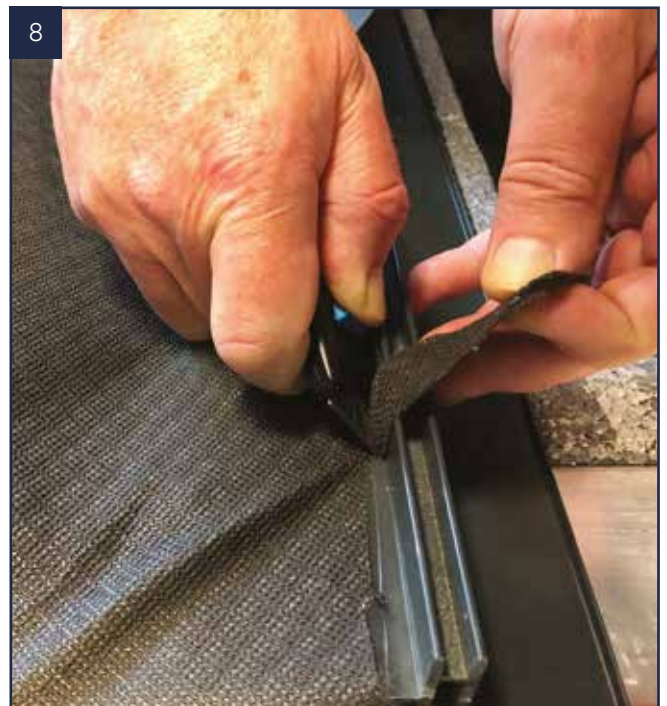
Position solstice bars into place sliding internal side under the eaves protector and up against the timber edge and screw down into place.



Fixings should be approximately 250 mm apart.



Fit breather membrane and trim around bars at the top.



Trim the membrane down the up stand of the bar leaving approximately a 5 mm gap.

Solstice Panel System

Fitting the Frame



Trim back membrane to expose the aluminium ridge.
Apply foam tape to the ridge section.



Allow an overhang of 15 mm for the plaster board stop beads.



Stop beads can be fitted at this time or after when the internals are being fitted.



Screw the stop beads into the timber ensuring the top is level with the top of the polystyrene edge.

Fitting the Glazing into a Metrotile Roof



Place glass into position and tile the roof up to the ridge position.



Ensure glass is tight down against the Eaves protector sat onto the foam tape.



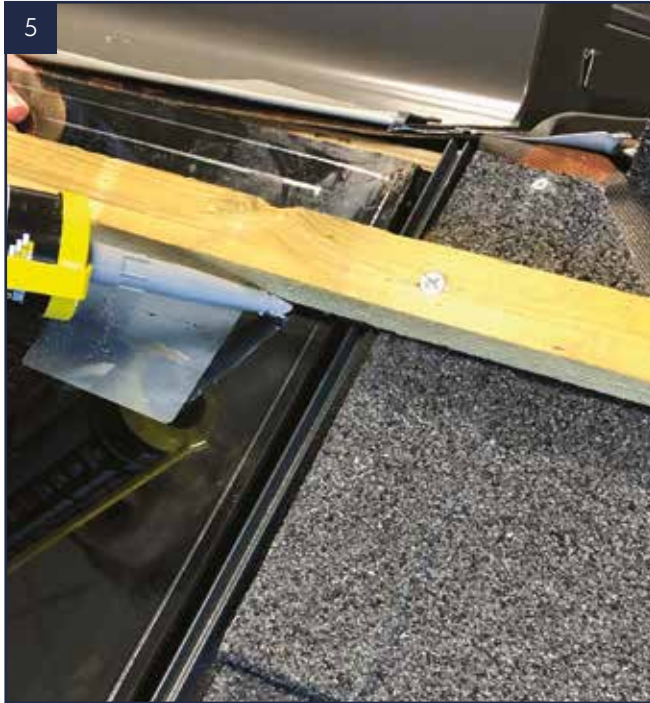
Measure down 85 mm from top of glass for batten bottom edge fixing position, screw batten down at each end.



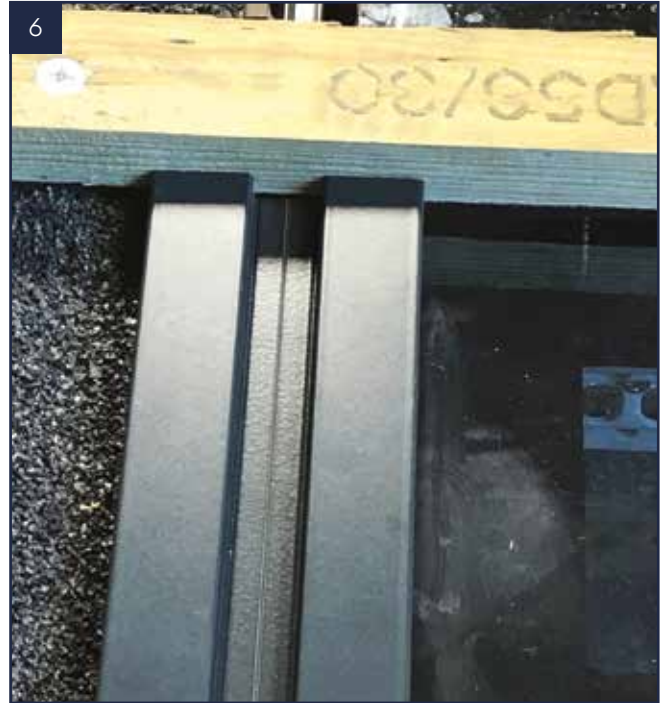
Start sealing along the bottom edge over the tiles.

Solstice Panel System

Fitting the Glazing into a Metrotile Roof



Seal along the glass on the bottom edge of the batten.



Butt the top caps up tight against the batten.



Screw the top caps down into position.



Push fit top cap trim into position.



Position pre notched ridge top cap into place ensuring the notches align with the top cap positions.



Fix the ridge top cap through into the baton.



Seal over the top caps against the ridge cap.



If there is a large gap fill the gap first with silicone allow to start setting.

Solstice Panel System

Fitting the Glazing into a Metrotile Roof



Once the silicone has skinned over on the outside apply grit glue.

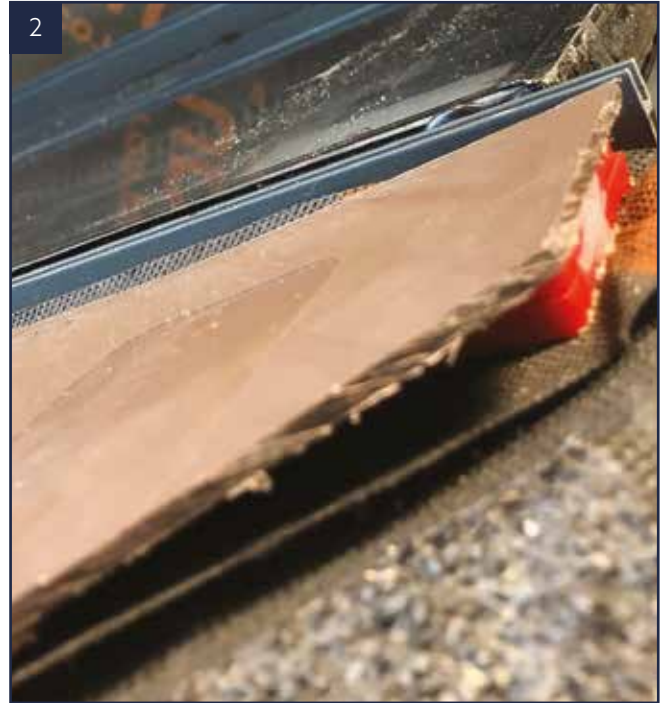


Apply the grit to give a clean neat finish.

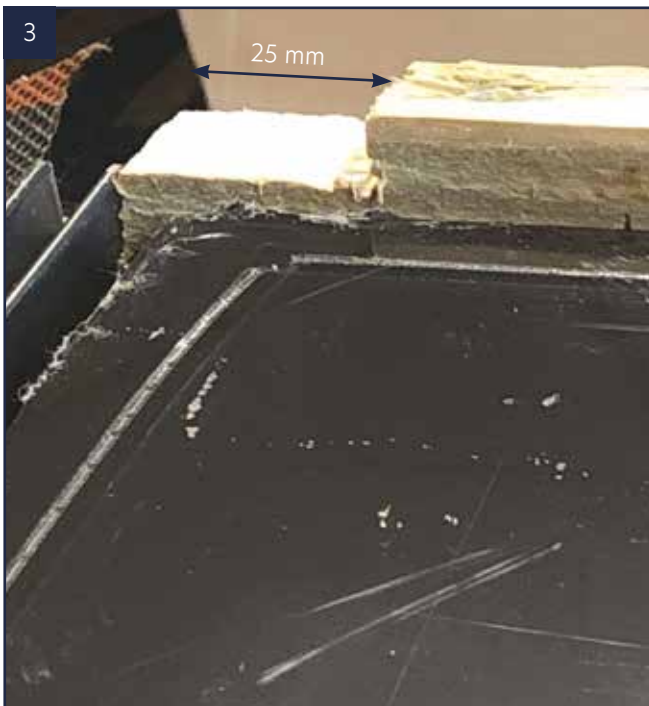
Fitting the Glazing into a Slate Roof



1
Slate the roof around the solstice panel. Ensure a packer is placed under the top row of tiles around the solstice.



2
The packer is fitted to level the slates with the solstice panel thickness to aid ridge cap sealing.



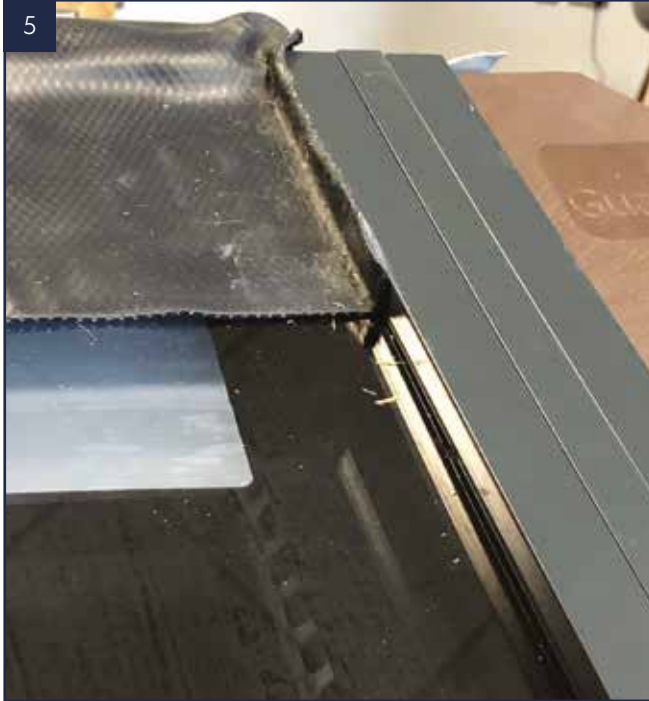
3
Batten should be notched level with the top of the glass and about 25 mm long as shown.



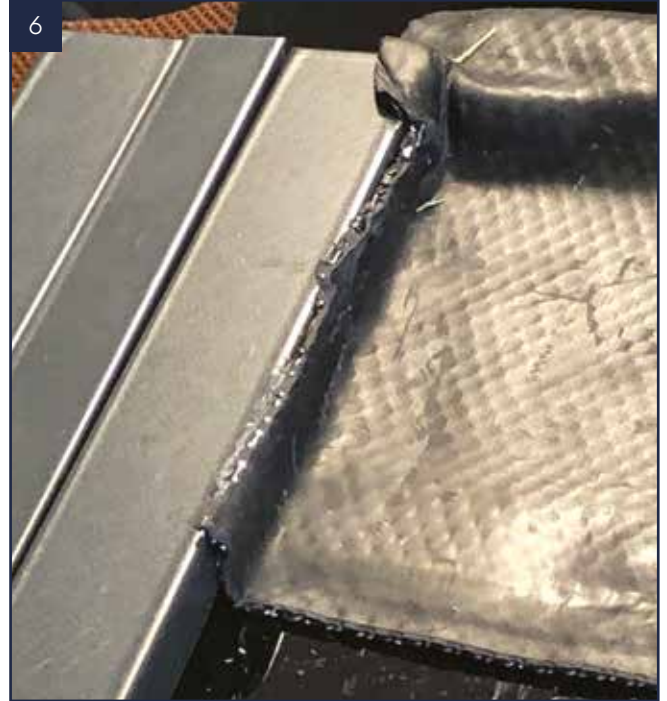
4
Fix the notched timber batten at the top of the solstice panel through into the ridge.

Solstice Panel System

Fitting the Glazing into a Slate Roof



After installing the top cappings into position, measure the length of the flashing.



Seal over the ridge between the top caps using a flash band seal or similar.



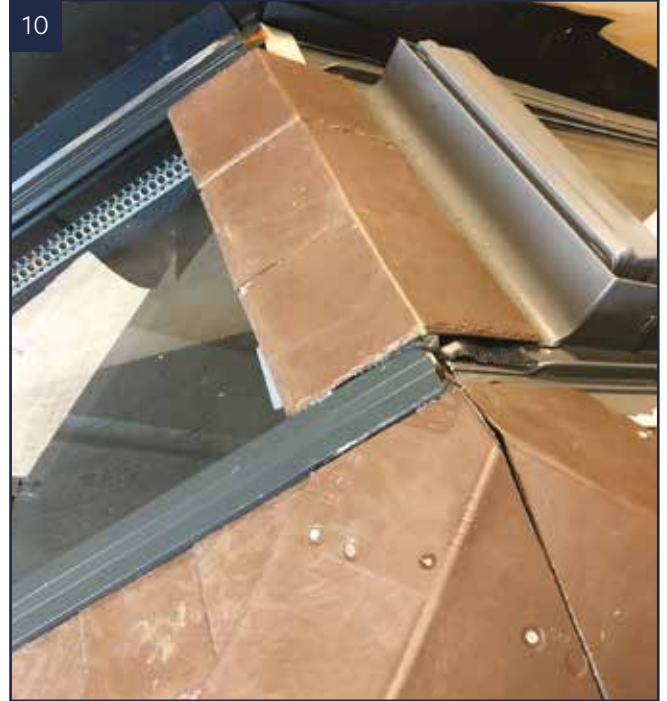
Place a trimmed row of ridge slates over the flashing, these are there for packing purposes only.



Fit the final top slate into position using the same flashing seal over the top row of tiles.



Fit the hip slates starting at the bottom corner of the hips.



Finished hip detail at the top of the hips and ridge point.



Again with the flashing create an apron detail as above for complete sealing.



Finally fit the top row of ridge slates fixing down through the slate into the timber batten.



Home improvement solutions from



www.guardianbuildingsystems.co.uk
customerservices@guardianbuildingsystems.co.uk
0800 066 5832
Units 2-3 Dunstall Park Road, Derby DE24 8HJ



Whilst Guardian has made every attempt to ensure that this information is accurate and reliable at the time of its publication; we cannot accept responsibility for any errors, omissions, inaccuracies or any changes that have occurred since the date of publication or for the results obtained from the use of such information.

Version 1.0, Feb 2022