

# Survey Form (Aluminium Flat Rooflight)

Customer:

Tel:

Fax:

Email:

Postcode:

Job Ref:

Tel: 0191 455 8866

Fax: 0191 447 6618

Email: trade@premierroofsystems.co.uk

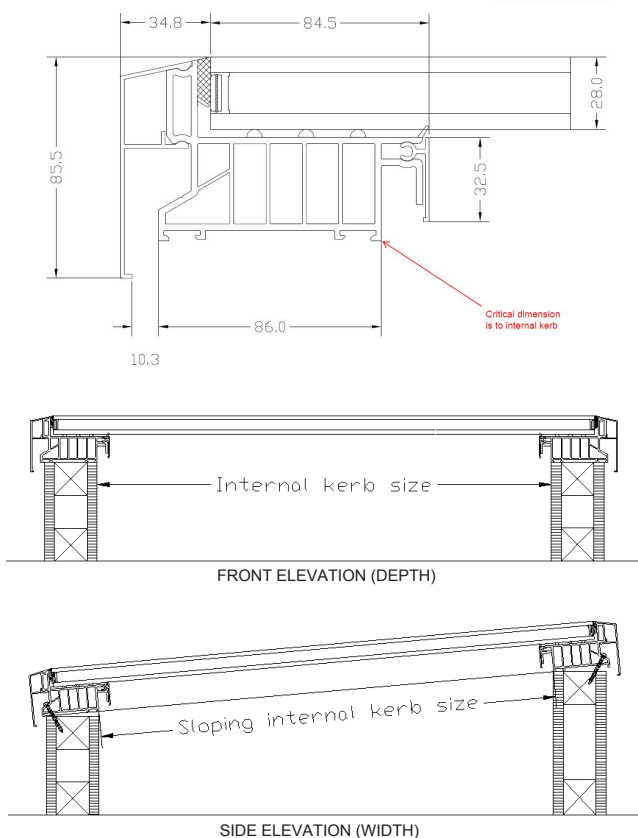
Website: www.premierroofsystems.co.uk

Address: Unit 8 Tyne Point Ind. Estate, Shaftesbury Avenue  
Jarrow, Tyne and Wear, NE32 3UP

**All Aluminium Flat Rooflight must be measured from the internal upstand face. For more information please contact us.**

## MEASURING

How to measure your Atlas.



Note: Dimensions of width is taken as the internal slope of the kerb

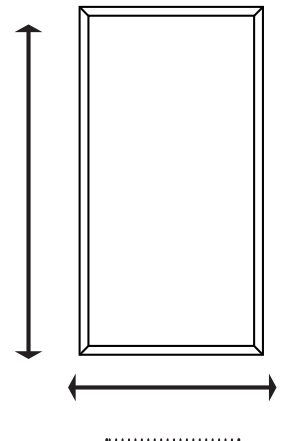
Weather resistant - 5 degree pitched kerb allowing the water to drain off the glazing unit onto the existing flat roof.

## DIMENSIONS

Please give accurate roof dimensions.

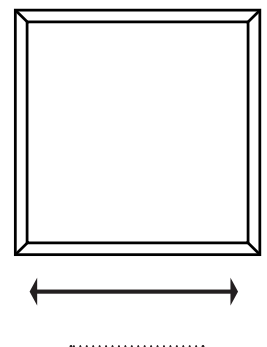
The following roof plans are for illustration purpose only.

- Maximum Size Range (1): 1000mm X 3000mm
- Maximum Size Range (2): 1200mm X 2500mm
- Maximum Size Range (3): 1400mm X 2000mm



- Minimum Size: 400mm X 400mm
- Maximum Size: 1400mm X 1400mm

Atlas Square



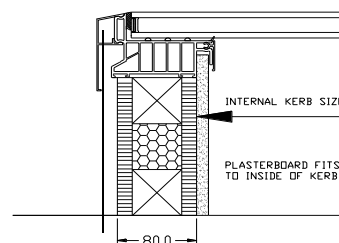
## : F5A97C@CI F

- ☐ External: White | Internal: White
- ☐ External: Anthracite Grey | Internal: White
- ☐ External: Anthracite Grey | Internal: Anthracite Grey
- ☐ External: Black | Internal: White
- ☐ External: Black | Internal: Black
- ☐ Bespoke RAL Colour: (Additional Cost)
- External:                      Internal:

## GLASS OPTIONS\*

- ☐ Activ Blue
- ☐ Activ Neutral
- ☐ Standard Clear

\*1.0 U-Value as standard.



Atlas Kerb Width: 80mm excluding plasterboard

Please note – All Aluminium Flat Rooflights are made to order following structural safety guidelines.

## Additional Notes:

- ☐ Delivery      ☐ Collection

Delivery Address:

Delivery Postcode:

Required Date: